

**176 LOTS**  
LAND O'LAKES, FLORIDA

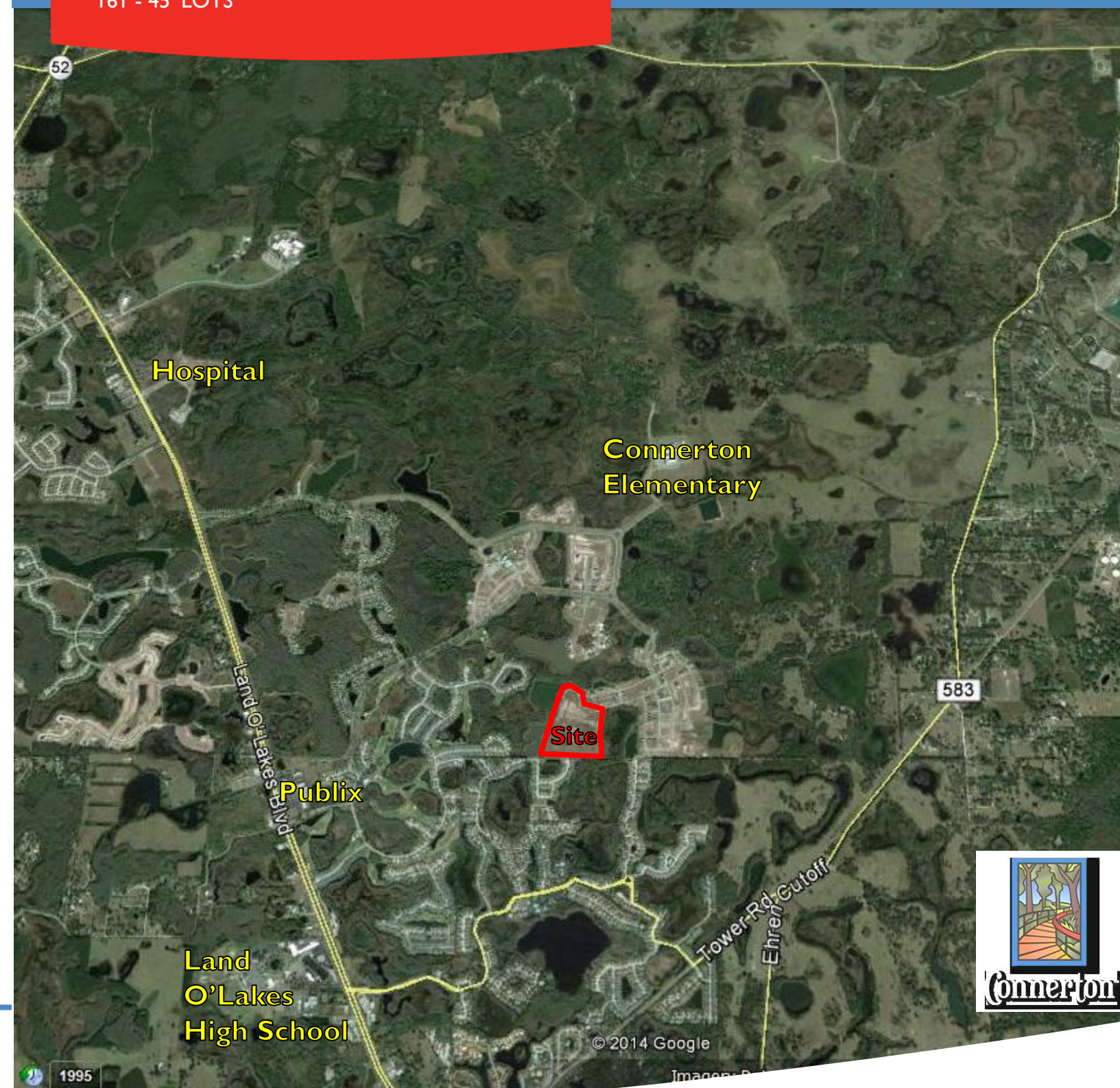
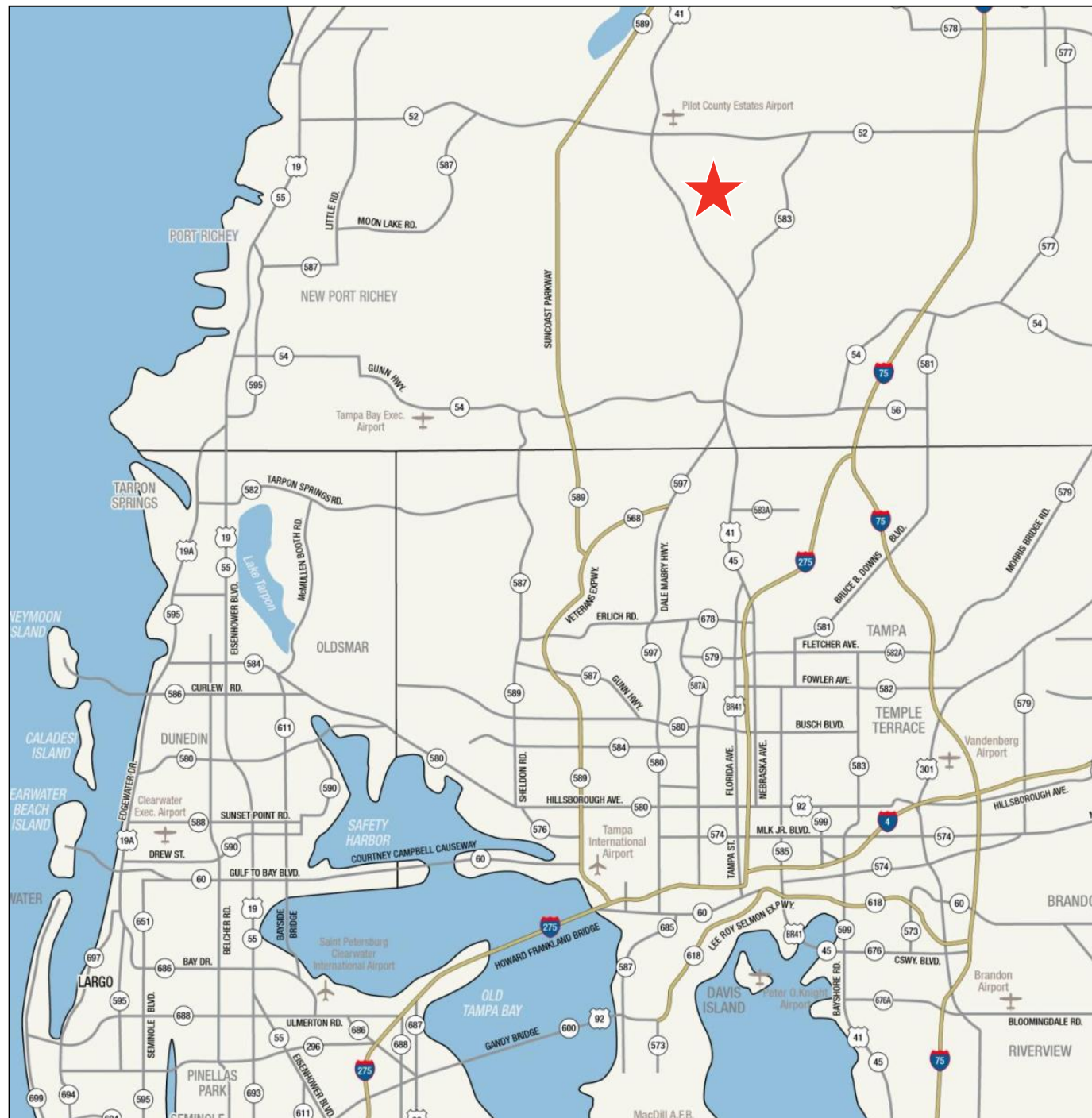
RESIDENTIAL  
LOTS  
FOR SALE

**176 LOTS**  
LAND O'LAKES, FLORIDA



15 - 55' LOTS  
161 - 45' LOTS

FOR SALE RESIDENTIAL LOTS



For more information, please contact:

**BRUCE K. ERHARDT, ALC**  
Executive Director  
813.223.6300  
Bruce.erhardt@cushwake.com

**CUSHMAN & WAKEFIELD OF FLORIDA, INC.**  
One Tampa City Center, Suite 3600  
Tampa, Florida 33602-5813  
www.cushmanwakefield.com/tampa

The depiction in the included photograph of any person, entity, sign, logo or property, other than Cushman & Wakefield's (C&W) client and the property offered by C&W, is incidental only, and is not intended to connote any affiliation, connection, association, sponsorship or approval by or between that which is incidentally depicted and C&W or its client. This listing shall not be deemed an offer to lease, sublease or sell such property; and, in the event of any transaction for such property, no commission shall be earned by or payable to any cooperating broker except if otherwise provided pursuant to the express terms, rates and conditions of C&W's agreement with its principal, if, as and when such commission (if any) is actually received from such principal. (A copy of the rates and conditions referred to above with respect to this property is available upon request.)





# 176 LOTS

## LAND O'LAKES, FLORIDA

RESIDENTIAL  
LOTS  
FOR SALE

### PROFILE

The lots are part of the 3,684 unit, 6,950 acre award winning master planned community. There are currently 350 homes and Connerton is on track for 120 sales in 2014. Current builders are Homes By WestBay, M/I Homes, Ryland Homes, and Taylor Morrison. New home prices range from \$209,990 to \$630,320.

### LOCATION

Southeast quadrant of U.S. Highway 41 and S.R. 52, Land O'Lakes, Pasco County, Florida.

### LOT SIZES

15 – 55' lots  
161 - 45' lots, 30' product

### AMENITIES

- Club Connerton with a water park, fitness center, café, basketball, volleyball and tennis courts
- 8 miles of paved walking and biking trails inside Connerton
- Contiguous Conner Preserve has 12.5 miles of biking trails, 5.2 miles of equestrian trails, and 16 miles of hiking only trails
- For more information, visit [www.connerton.com](http://www.connerton.com)

### PROPERTY FEATURES

- Mass graded or fully developed
- 24 lakefront lots
- 24 wetland preserve lots
- 0.82 acre neighborhood park
- Proposed CDD/POA under \$250/month
- Contiguous to The Grove Golf and Country Club
- Average household income of \$81,796
- Average age is 43.56



DISTANCES	
Connerton Elementary School	1.4 miles
Land O'Lakes High School	3.3 miles
Pineview Middle School	7.0 miles
U.S. Highway 41	2.4 miles
Suncoast Expressway	12.6 miles
I-75	13.7 miles
Publix	2.4 miles
Wal-Mart	6.8 miles
Target	9.6 miles
Shoppes at Wesley Chapel	16.1 miles

