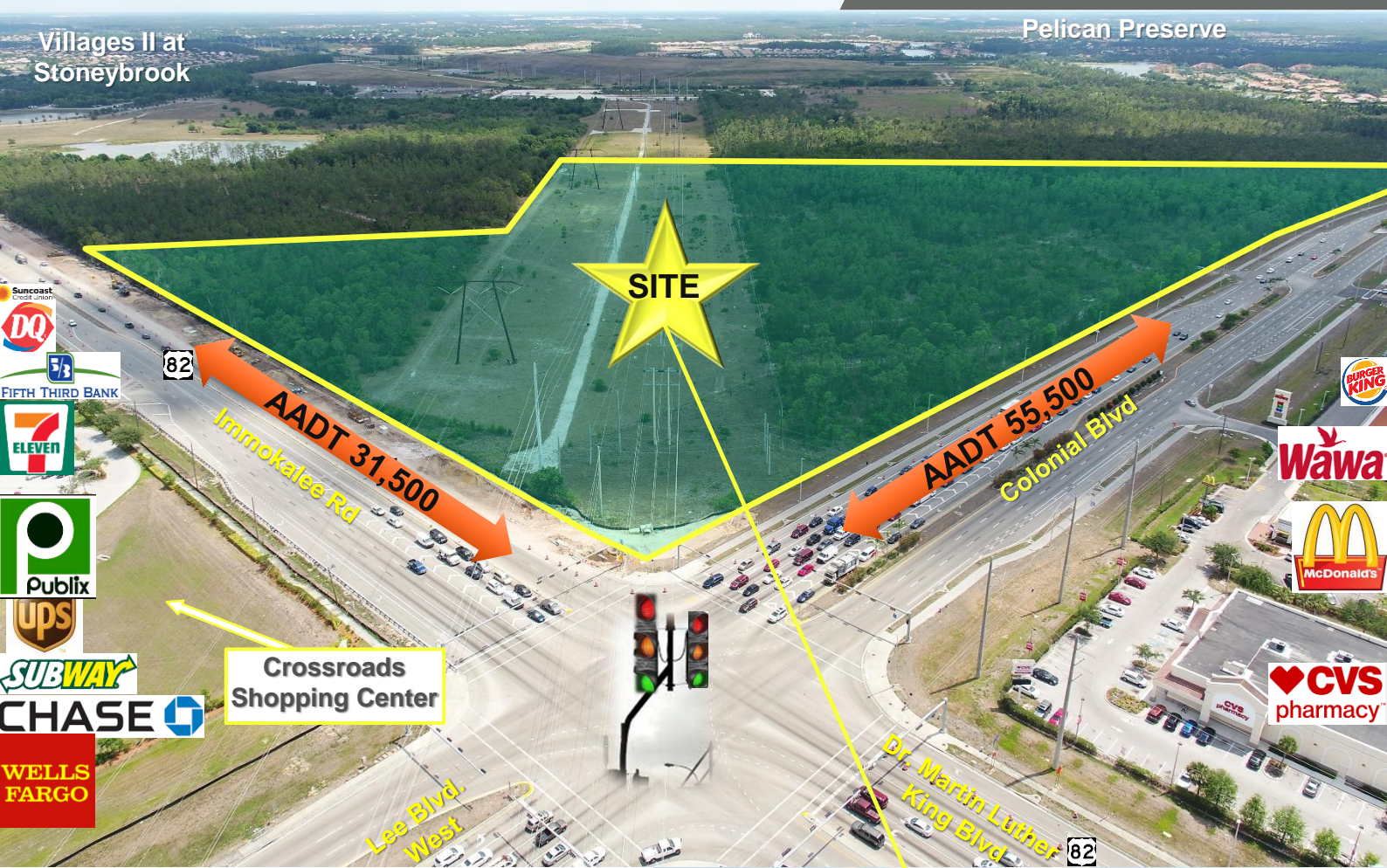


Villages II at
Stoneybrook

Pelican Preserve



Property Highlights:

- Direct frontage along major corridor-Colonial Blvd.
- High traffic counts and great visibility
- 55,500 AADT on Colonial Blvd.
- Close to I-75 and SR 82
- Proximity to numerous residential communities

Property Details

Asking Price	\$7.00-\$18.50 PSF
Property Type	10 Outparcels
Lot Sizes	1.22-16.29 Acres
Zoning	PUD

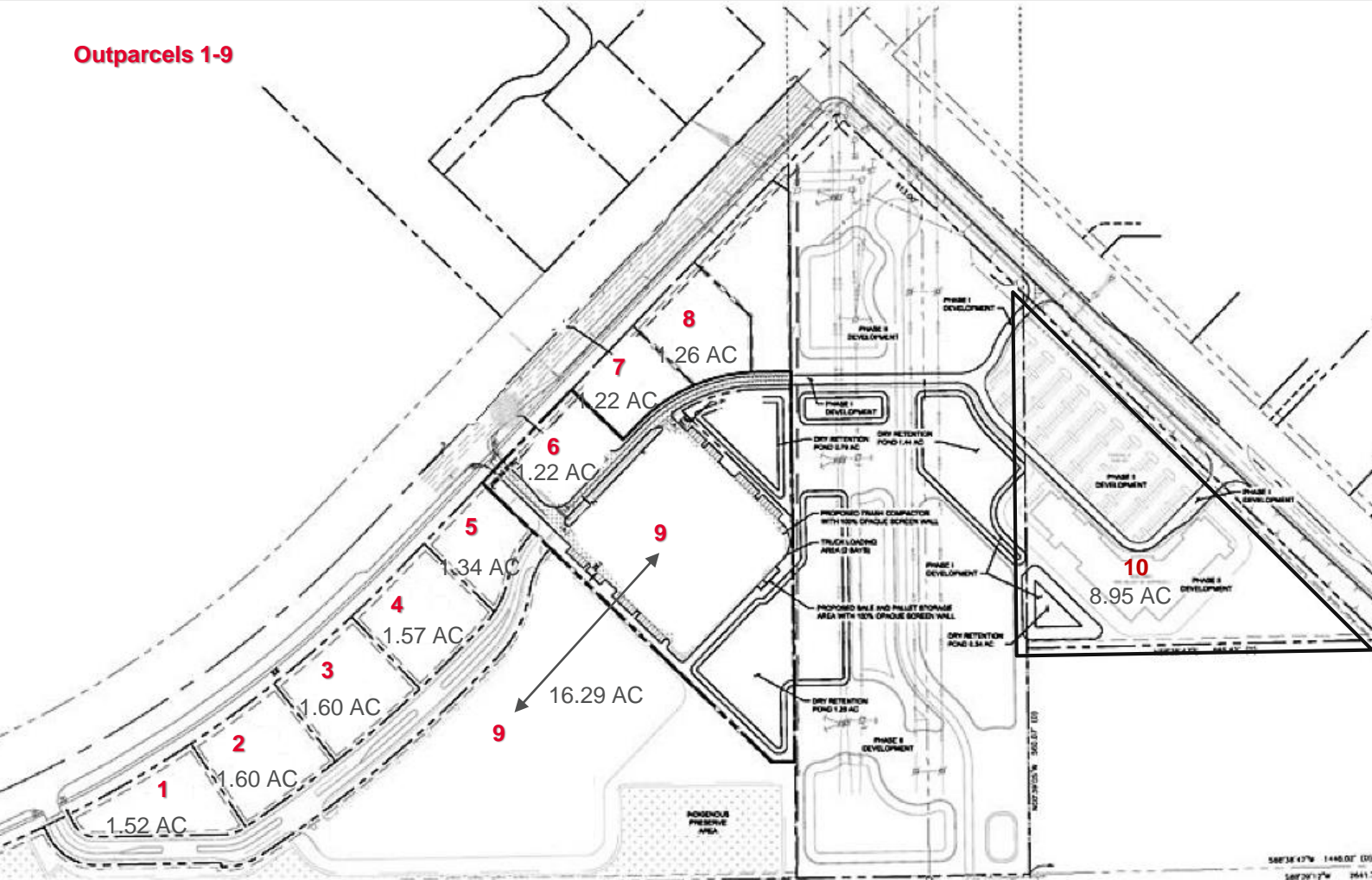


For more information, please contact:

GARY TASMAN
CEO & Principal Broker
239.489.3600
gtasman@cpswfl.com

SHAWN STONEBURNER
Senior Director
239.489.3600
sstoneburner@cpswfl.com

5220 Summerlin Commons Blvd., Ste. 500
Fort Myers, FL 33907
239.489.3600
www.cpswfl.com

Outparcels 1-9


Outparcel	AC	SF	Price PSF	Value
1	1.52	66,211	\$18.00	\$1,192,000
2	1.60	69,696	\$17.00	\$1,185,000
3	1.60	69,696	\$17.00	\$1,185,000
4	1.57	68,389	\$17.00	\$1,162,500
5	1.34	58,370	\$18.50	\$1,100,000
6	1.22	53,143	\$18.50	\$985,000
7	1.22	53,143	\$16.00	\$850,000
8	1.26	54,885	\$17.00	\$950,000
9	16.29	709,592	\$7.00	\$5,000,000
10	8.95	389,862	\$8.00	\$3,200,000

For more information, please contact:

GARY TASMAN
 CEO & Principal Broker
 239.489.3600
qtasman@cpswfl.com
SHAWN STONEBURNER
 Senior Director
 239.489.3600
sstoneburner@cpswfl.com

 5220 Summerlin Commons Blvd., Ste. 500
 Fort Myers, FL 33907
 239.489.3600
www.cpswfl.com