



Property Profile

ADDRESS

282 N Auburn Road
Venice, Florida 34292

ZONING

OUE – 1 Open use estate;
1 DU per 5 acres; Sarasota County

UTILITIES

Sewer: 8” gravity main
located south along Valencia
Lake Dr.

SIZE

Ten Acres, MOL

FLU

MODR – Moderate Density
Residential; >2 and <5 DU
per acre; Sarasota County

Water: 8” water main located
east along King Palm Court

VISIT WEBSITE

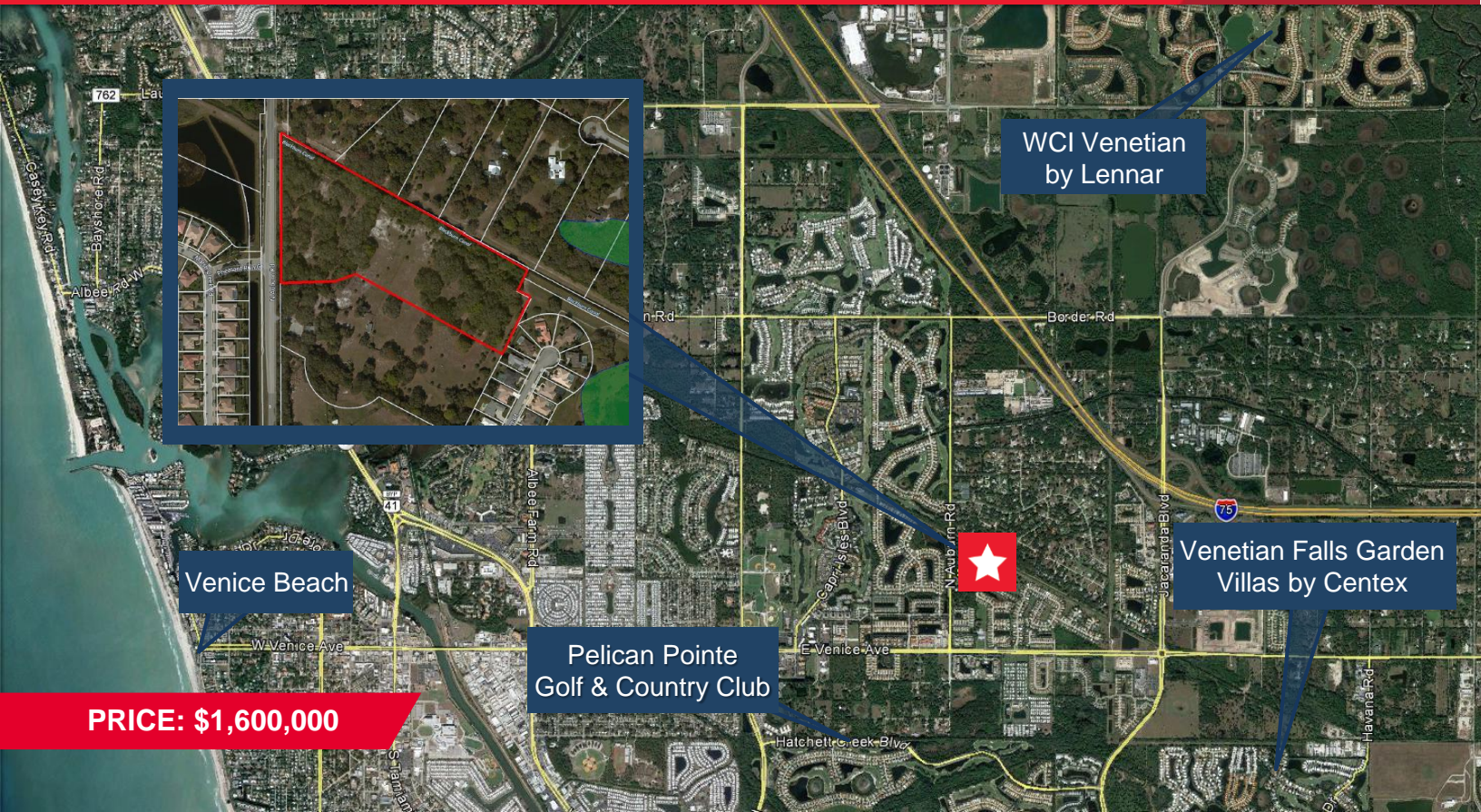


For more information, please contact:

Bruce K. Erhardt, ALC
Executive Director
+1 813 223 6300
bruce.erhardt@cushwake.com

Jeannette Jason, CCIM
Director
+1 813 254 4900
jeannette.jason@cushwake.com

One Tampa City Center
Suite 3300
Tampa, Florida 33602
cushmanwakefield.com



Distances



Shopping & Restaurants

Walgreens & Publix at Venice Commons	0.95 miles
CVS & Publix at Jacaranda Commons	0.96 miles



Medical

Gulf Coast Medical Urgent Care	0.43 miles
Venice Regional Bayfront Health	2.91 miles



Entertainment

Pelican Pointe Golf & County Club	1.27 miles
Venice Performing Arts Center	2.64 miles
Venice Beach	3.7 miles



Airports

Venice Municipal Airport	2.63 miles
Sarasota – Bradenton International	23.02 miles



Schools

Garden Elementary Schools "A" rating	1.69 miles
Venice High School "A" rating	2.64 miles
Venice Middle School "B" rating	3.56 miles

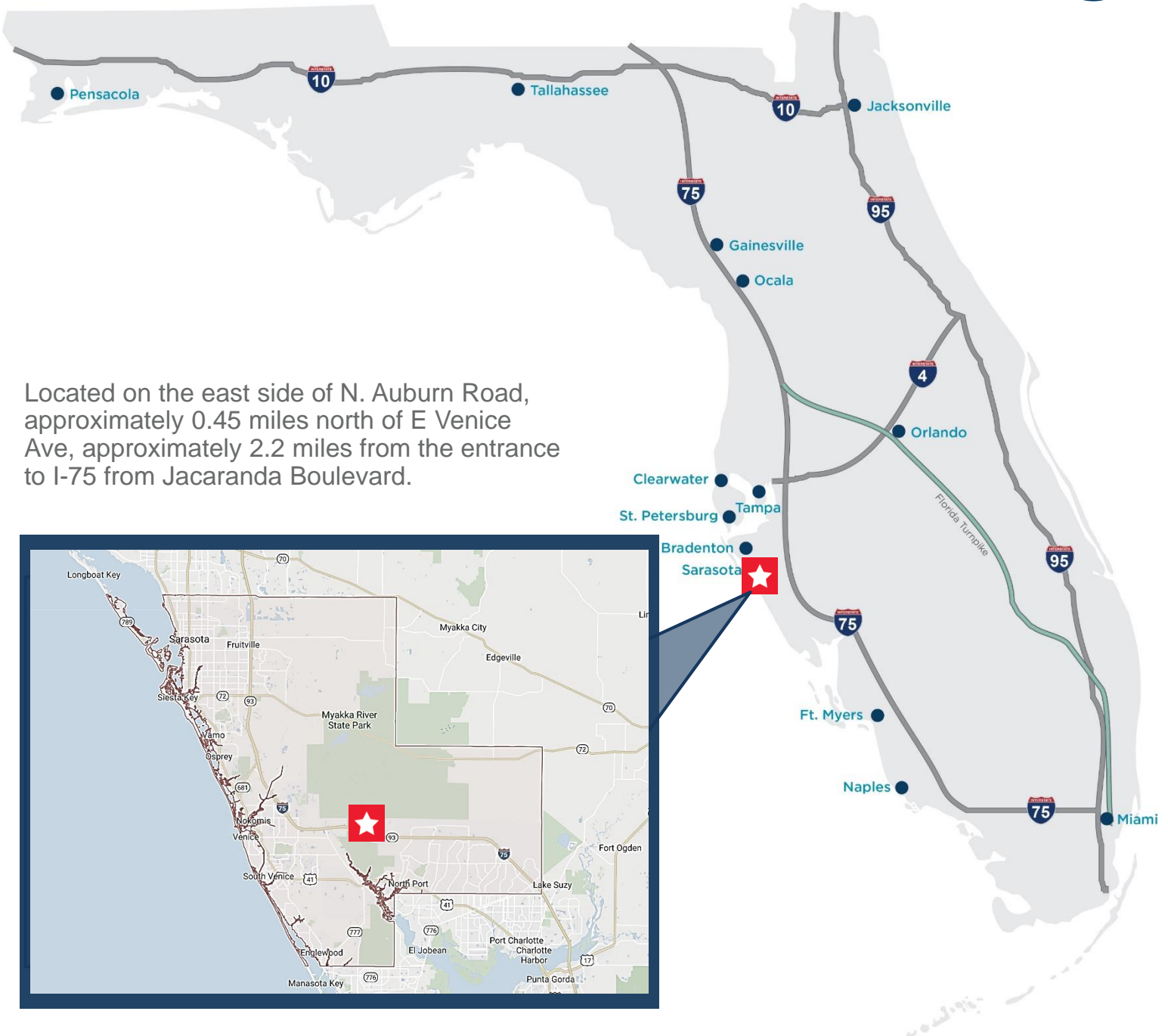
For more information, please contact:

Bruce K. Erhardt, ALC
Executive Director
+1 813 223 6300
bruce.erhardt@cushwake.com

Jeannette Jason, CCIM
Director
+1 813 254 4900
jeannette.jason@cushwake.com

One Tampa City Center
Suite 3300
Tampa, Florida 33602
cushmanwakefield.com

SARASOTA COUNTY, FL



Located on the east side of N. Auburn Road, approximately 0.45 miles north of E Venice Ave, approximately 2.2 miles from the entrance to I-75 from Jacaranda Boulevard.

For more information, please contact:

Bruce K. Erhardt, ALC
Executive Director
+1 813 223 6300
bruce.erhardt@cushwake.com

Jeannette Jason, CCIM
Director
+1 813 254 4900
jeannette.jason@cushwake.com

One Tampa City Center
Suite 3300
Tampa, Florida 33602
cushmanwakefield.com