

### HARD CORNER – SIGNALIZED INTERSECTION

- Densely populated trade area in close proximity to Fruitville Road (access to I-75)
- Frontage, visibility and access on Ringling Boulevard and Lime Avenue (16,700 VPD)
- Adjacent to new class “A” multifamily development (222 units)
- Urban infill location, suitable for retail, medical, restaurants and office uses
- Delivered in “pad ready” condition, with master retention
- Sixty-two shared parking spaces
- Master (off-site) retention, storm water connections will be stubbed to the commercial sites
- All utilities (water, sewer, electric) will be stubbed to the commercial sites

For more information, please contact:

**Bruce Erhardt**  
Executive Director  
+1 813 223 6300  
[bruce.erhardt@cushwake.com](mailto:bruce.erhardt@cushwake.com)

**Patrick Berman**  
Managing Director  
+ 1 813 204 5363  
[patrick.berman@cushwake.com](mailto:patrick.berman@cushwake.com)

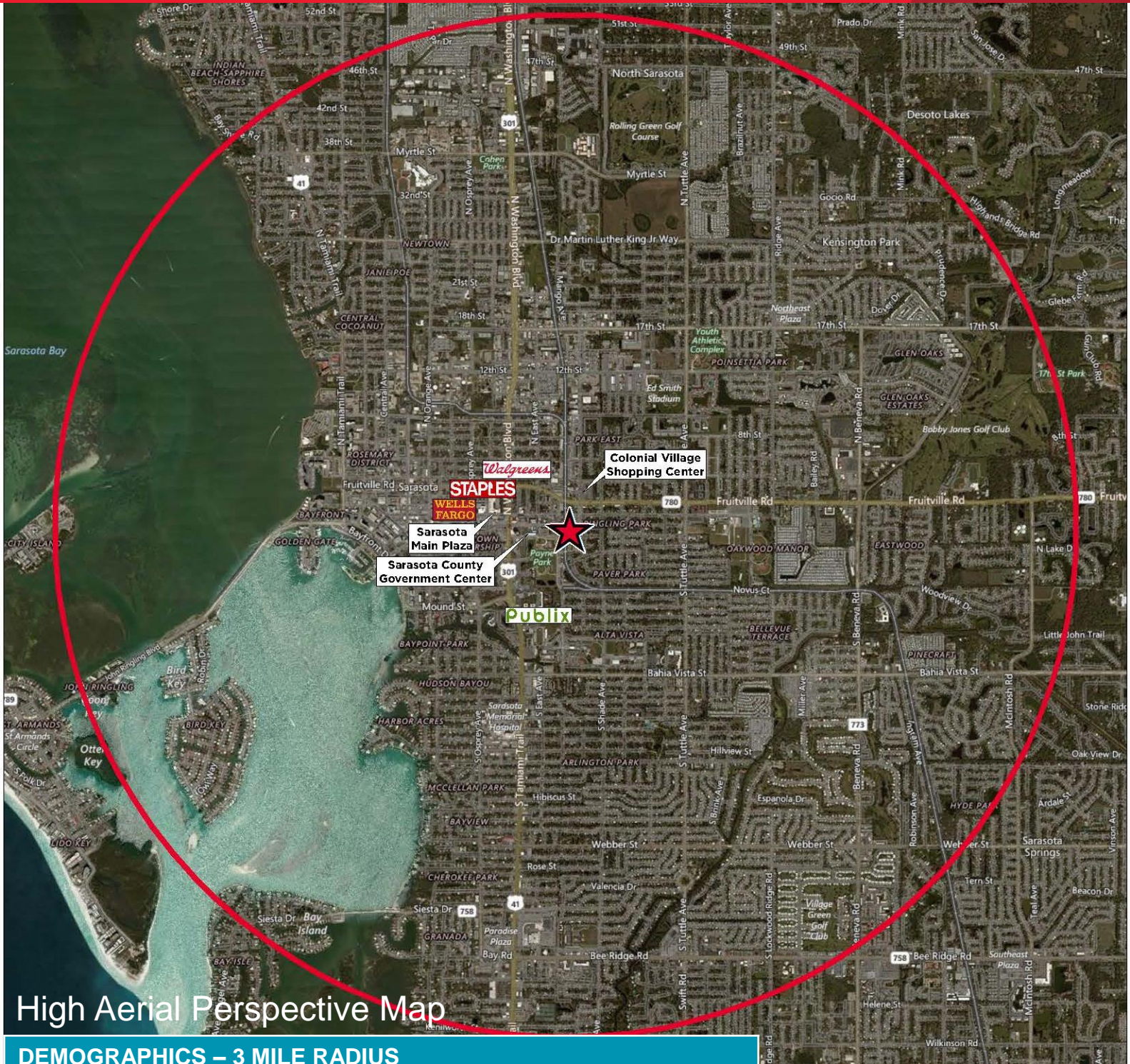
One Tampa City Center  
Suite 3300  
Tampa, FL 33602  
[Cushmanwakefield.com](http://Cushmanwakefield.com)



# For Sale

## Prime Commercial Sites

Lime Avenue & Ringling Blvd., Sarasota, FL



High Aerial Perspective Map

### DEMOGRAPHICS – 3 MILE RADIUS

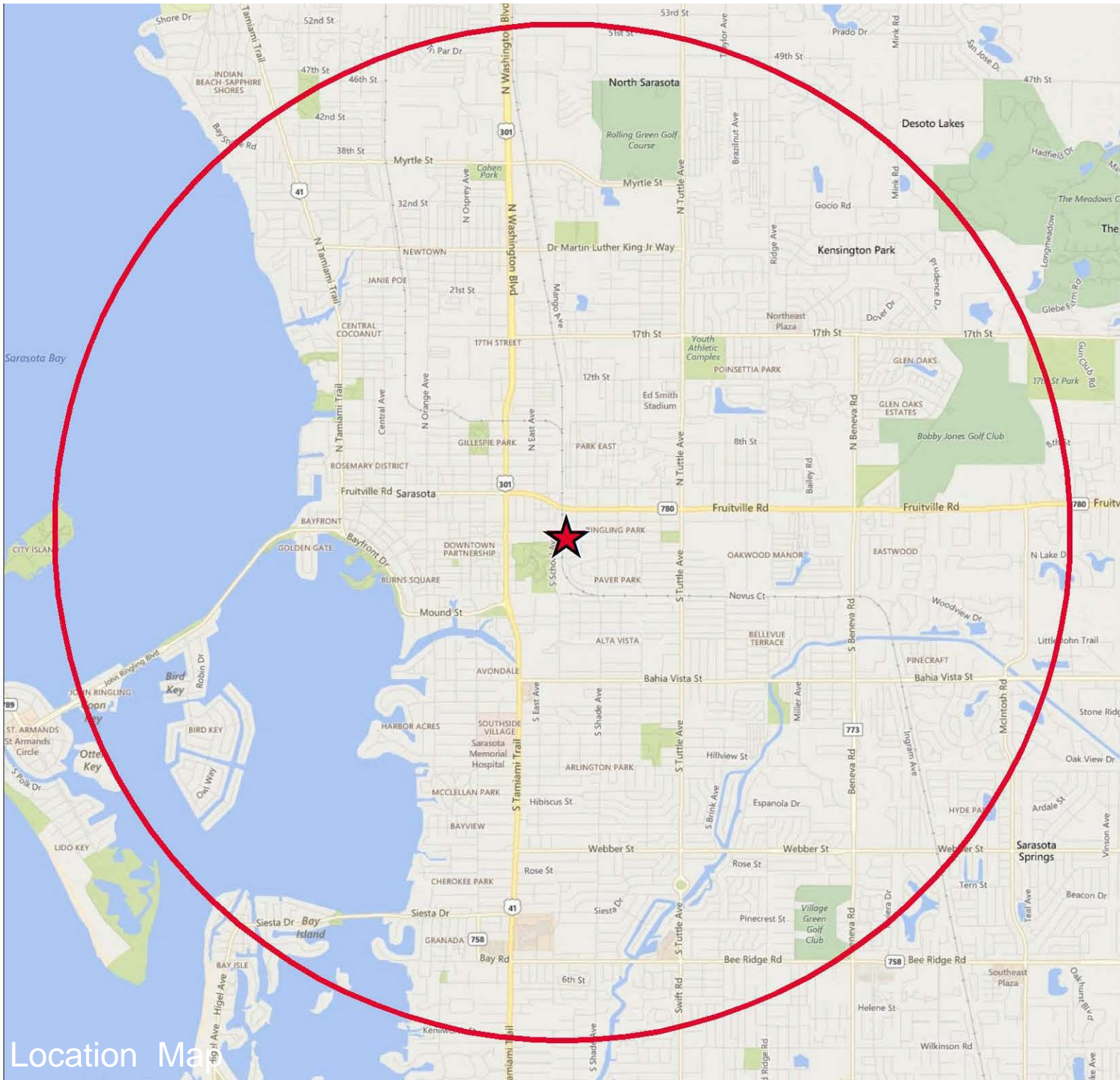
Population	80,780
Daytime Employment	63,752
Median Age	46.6
Average HH Income	\$66,875
Median HH Income	\$43,700
Retail Sales	\$1.4 B



# For Sale

## Prime Commercial Sites

Lime Avenue & Ringling Blvd., Sarasota, FL



Location Map

**Address:** 2290 Ringling Boulevard, Sarasota, FL 34237

**Location:** Southwest corner of Ringling Blvd. & Lime Avenue

**Zoning:** Downtown Edge (DTE)

**Land Use:** Commercial

**Entitlements:** Up to 9,950 SF per site

**Pricing:** (I) Southwest Corner: \$975,000, (II) Southwest Quadrant: \$875,000

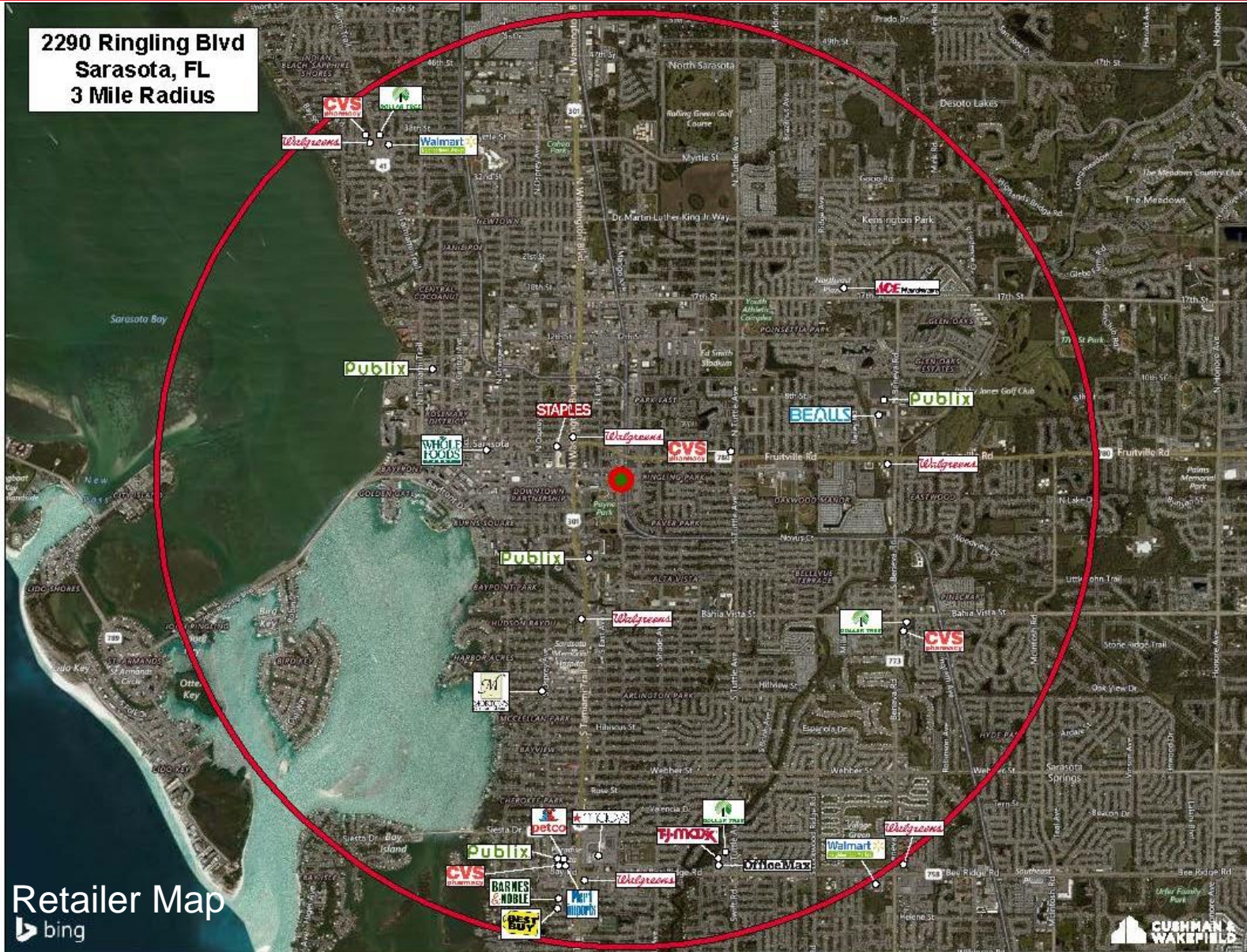


# For Sale

## Prime Commercial Sites

Lime Avenue & Ringling Blvd., Sarasota, FL

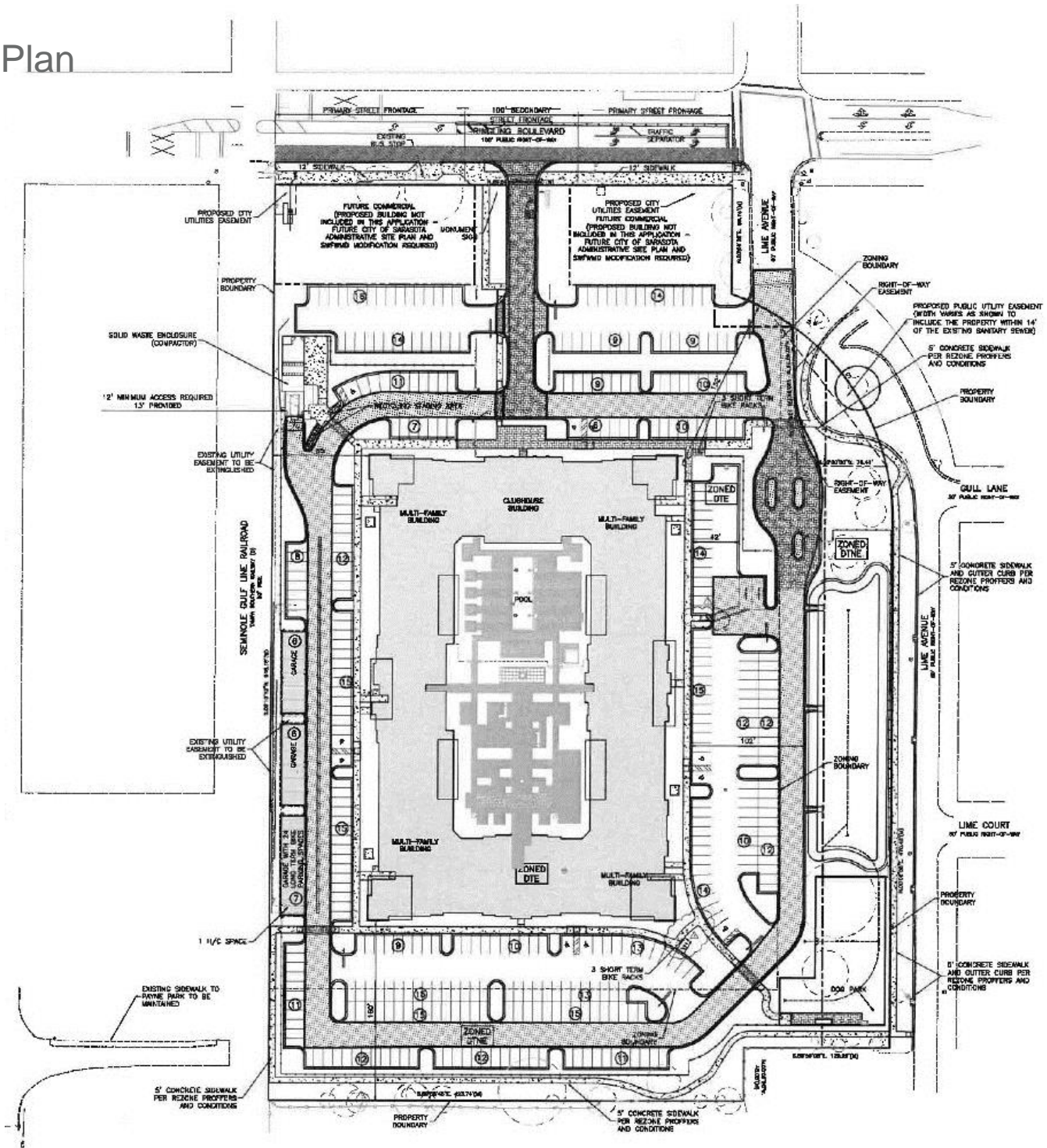
2290 Ringling Blvd  
Sarasota, FL  
3 Mile Radius



Retailer Map  
bing



### Site Plan



For more information, please contact:

**Bruce Erhardt**  
Executive Director  
+1 813 223 6300  
[bruce.erhardt@cushwake.com](mailto:bruce.erhardt@cushwake.com)

**Patrick Berman**  
Managing Director  
+ 1 813 204 5363  
[patrick.berman@cushwake.com](mailto:patrick.berman@cushwake.com)

One Tampa City Center  
Suite 3300  
Tampa, FL 33602  
[Cushmanwakefield.com](http://Cushmanwakefield.com)