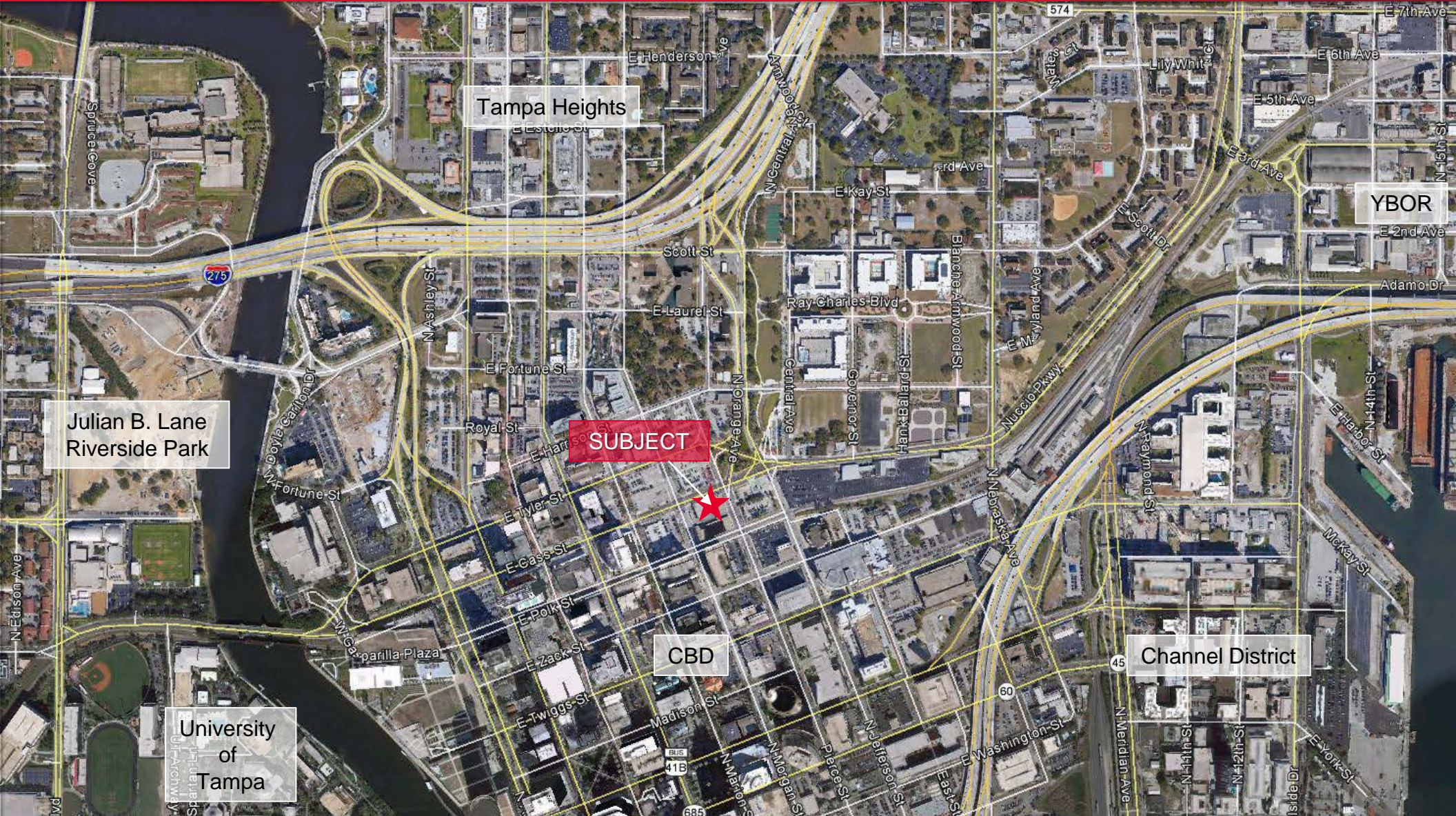




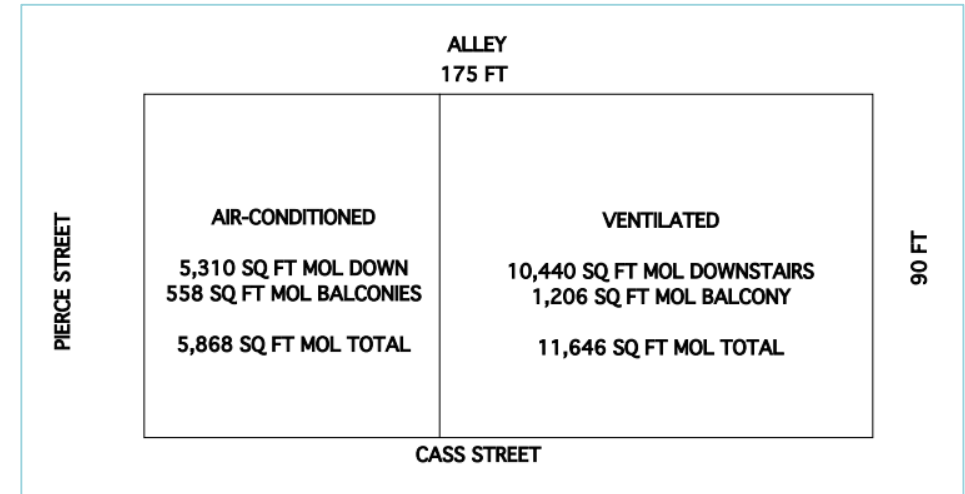
FOR SALE
603 E. CASS ST.
DOWNTOWN TAMPA CBD

Price: \$2,100,000



For more information, please contact:
Jeannette Jason, CCIM
Director
813 254 4900
Jeannette.Jason@cushwake.com

One Tampa City Center
Suite 3300
Tampa, Florida 33602
cushmanwakefield.com



PROPERTY INFORMATION

- **Location:** 603-611 East Cass Street
- **Land Size:** 15,750 SF MOL; 0.36 Acres MOL
- **Zoning:** CBD-1
- **Frontages:**
 - 175 feet MOL on East Cass Street
 - 90 feet MOL on Pierce Street
 - 175 feet MOL Public alley
- **Street Improvements:**
 - East Cass Street was converted in 2016 to a three lane, two way street, with a traffic separated two way cycle-track.
 - Pierce Street is a one way, four lane southbound street.
 - The alley is a two way alley 30 feet in width running east and west.

• Description of Improvements:

- 17,514 SF MOL; the site is improved with a one-story concrete block building.
- 15,750 SF MOL ground floor
- 1,764 SF MOL Mezzanine
- **Foundation:** Concrete slab on grade
- **Plumbing (previous):**
 - One restroom in the office area and one restroom in the parking area
- **HVAC (previous):**
 - Central heat and air in 5,310 square feet of the downstairs and 558 square feet of balconies.
- **Prior Building Uses:**
 - Previously owned from the 1930's until December 2013 by the Cunningham – Spencer family Built by Spencer and operated as an auto repair/distribution facility. Family operations ceased in 1967 and the building has been leased since that time to various tenants for use as a parking facility.
 - The subject is now owned by Tampa Hotel Holdings LLC and used as a private parking facility



FOR SALE
603 E. CASS ST.
 DOWNTOWN TAMPA CBD

Price: \$2,100,000

The property occupies all but 35 feet of a 1/2 city block in Downtown Tampa



[Click To Visit Website](#)

For more information, please contact:

Jeannette Jason, CCIM
 Director
 813 254 4900
 Jeannette.Jason@cushwake.com

One Tampa City Center
 Suite 3300
 Tampa, Florida 33602
 cushmanwakefield.com