

RESIDENTIAL DEVELOPMENT OPPORTUNITY

N Blue Lake Avenue
DeLand, FL

40± Acres
with potential for up to
550± additional acres

E Plymouth Ave

N Hill Ave

N Blue Lake Ave

*Charming Town of
DeLand, with Easy
Access to Daytona,
Metro Orlando*



Prime Residential Land in Historic DeLand

A Market Awaiting Inventory

DeLand continues to be a seller's market with median home sale values up \$7,000 year-over-year through May 2018, or 4%. The average price per square foot during this same period also rose significantly to \$115 per square foot, up from \$104 per square foot a year earlier. From a national perspective, Realtor.com predicts that the Deltona-Daytona Beach region, in which DeLand is a part, will be the third-hottest housing market in the country in 2018.

Sales of existing single-family homes are expected to rise 5.5%, while the median sales price of homes that change hands is forecast to climb another 6%. The median price of homes currently listed in DeLand is \$269,000, Inventories of properties for sale have increased, rising 4% just between May and June 2018.

Data from Trulia/Realtor.com, June 2018

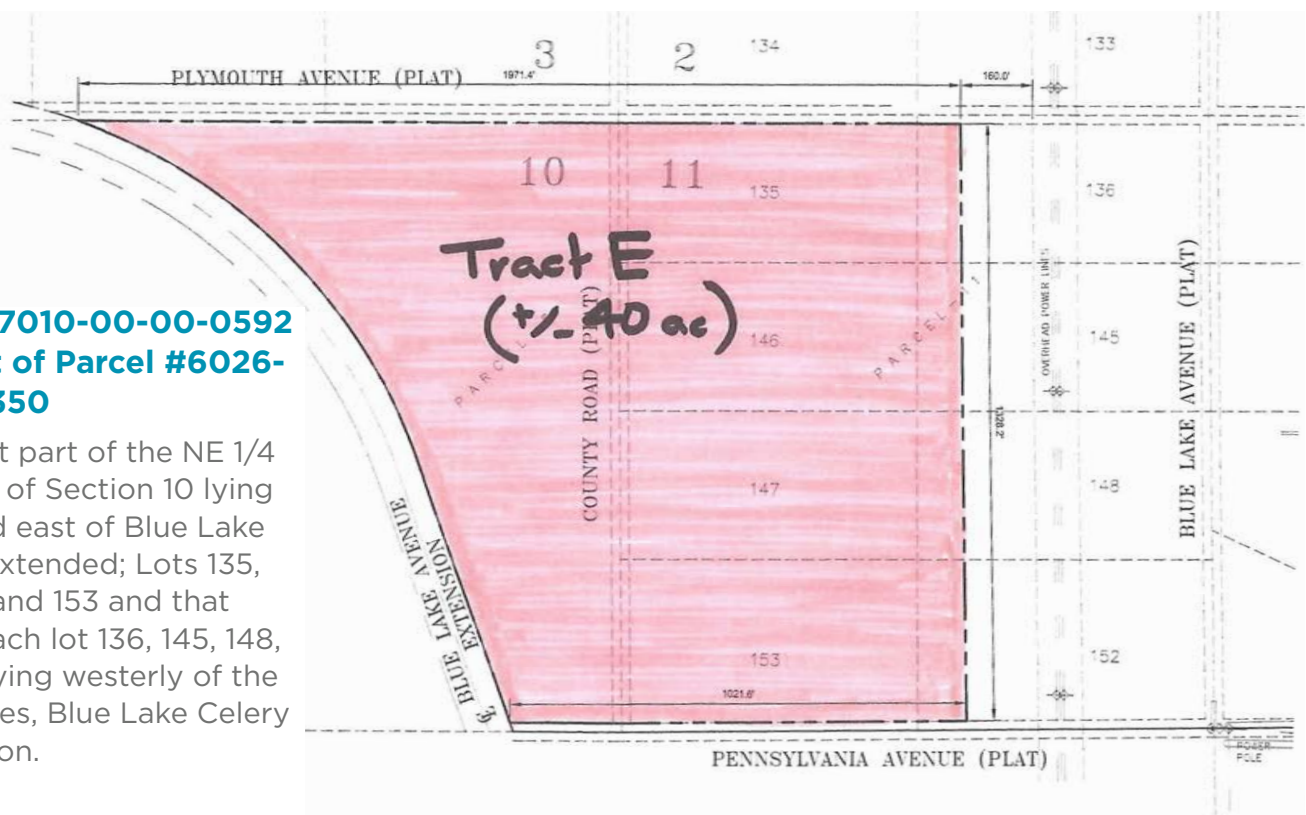
LOCATION	N Blue Lake Avenue, DeLand, FL
ACCESS	Off Jacobs Rd, off US 92 (International Speedway Blvd)
SIZE	40± acres
ZONING	Residential upon annexation into the City of DeLand
UTILITIES	City of DeLand Service Area
SCHOOLS	Freedom Elementary (A) DeLand Middle School (C) DeLand High School (A)

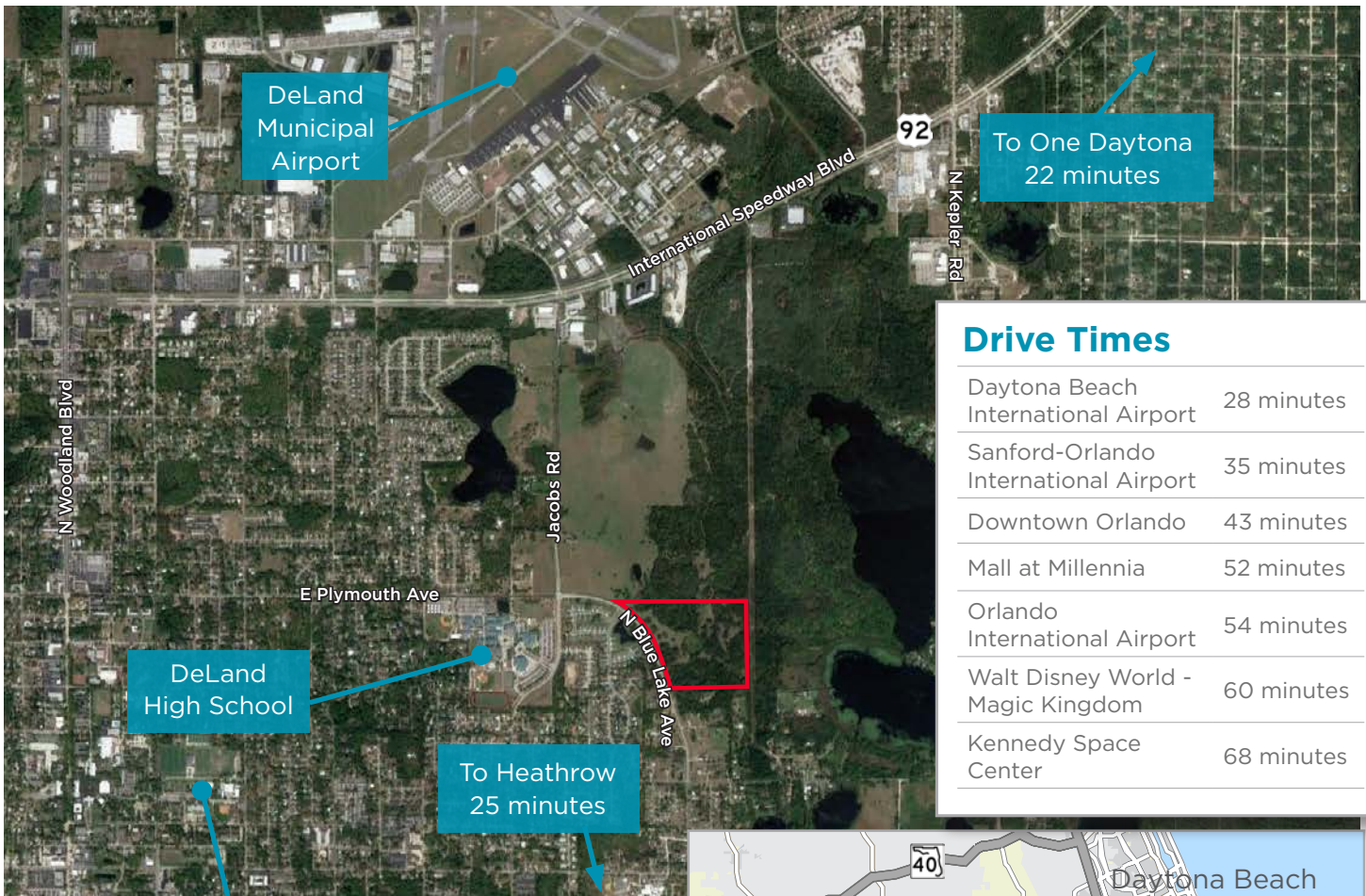


Downtown DeLand

Parcel #7010-00-00-0592 and part of Parcel #6026-01-00-1350

All of that part of the NE 1/4 of NE 1/4 of Section 10 lying north and east of Blue Lake Avenue extended; Lots 135, 146, 147, and 153 and that part of each lot 136, 145, 148, and 152 lying westerly of the power lines, Blue Lake Celery Subdivision.





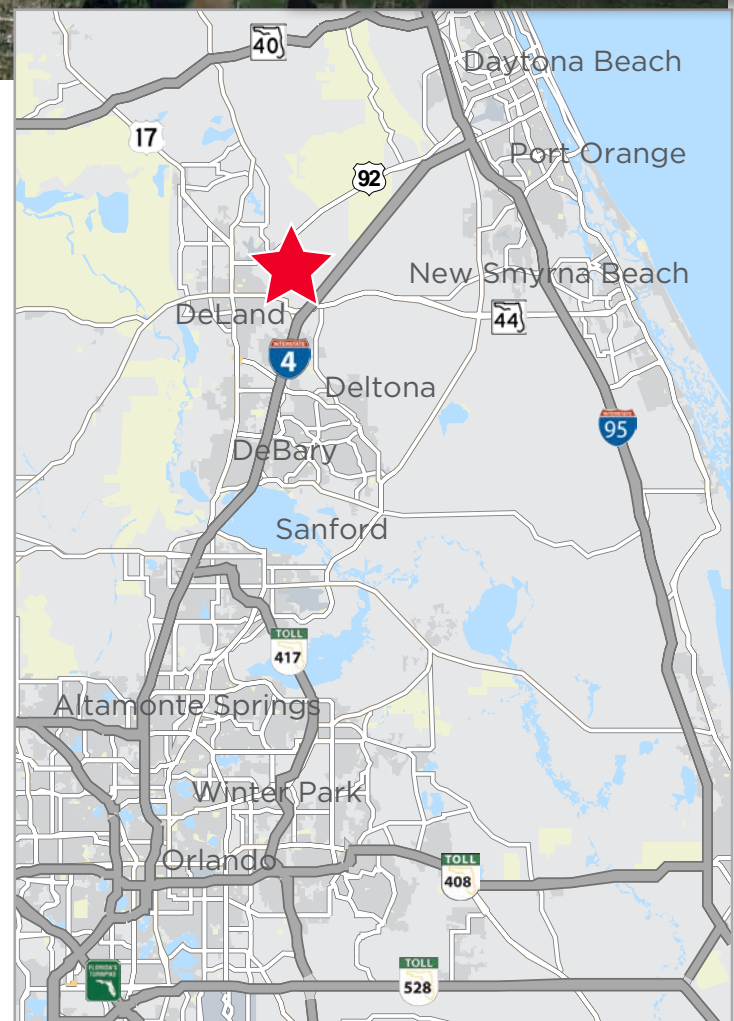
Drive Times

Daytona Beach International Airport	28 minutes
Sanford-Orlando International Airport	35 minutes
Downtown Orlando	43 minutes
Mall at Millennia	52 minutes
Orlando International Airport	54 minutes
Walt Disney World - Magic Kingdom	60 minutes
Kennedy Space Center	68 minutes

Stetson University

By the Numbers

Enrollment	4,330
Undergraduate	3,084
Graduate	1,246
Faculty	265
Endowment	\$208,878,395
Founded	1883





Located in Historic DeLand, an Award-Winning Florida Main Street Community

The first community to
receive the Main Street
designation in Florida.



For more information, contact:

Margery Johnson
Senior Director

+1 407 541 4395 direct

+1 407 435 4947 mobile

margery.johnson@cushwake.com

Andy Slowik
Director

+1 407 541 4428 direct

+1 941 779 5989 mobile

andrew.slowik@cushwake.com



20 North Orange Avenue
Suite 300
Orlando, FL 32801

cushmanwakefield.com



cushwakeorlando.com

[@cushwakeorlando](https://twitter.com/cushwakeorlando)

©2018 Cushman & Wakefield. All rights reserved. The information contained in this communication is strictly confidential. This information has been obtained from sources believed to be reliable but has not been verified. NO WARRANTY OR REPRESENTATION, EXPRESS OR IMPLIED, IS MADE AS TO THE CONDITION OF THE PROPERTY (OR PROPERTIES) REFERENCED HEREIN OR AS TO THE ACCURACY OR COMPLETENESS OF THE INFORMATION CONTAINED HEREIN, AND SAME IS SUBMITTED SUBJECT TO ERRORS, OMISSIONS, CHANGE OF PRICE, RENTAL OR OTHER CONDITIONS, WITHDRAWAL WITHOUT NOTICE, AND TO ANY SPECIAL LISTING CONDITIONS IMPOSED BY THE PROPERTY OWNER(S). ANY PROJECTIONS, OPINIONS OR ESTIMATES ARE SUBJECT TO UNCERTAINTY AND DO NOT SIGNIFY CURRENT OR FUTURE PROPERTY PERFORMANCE.