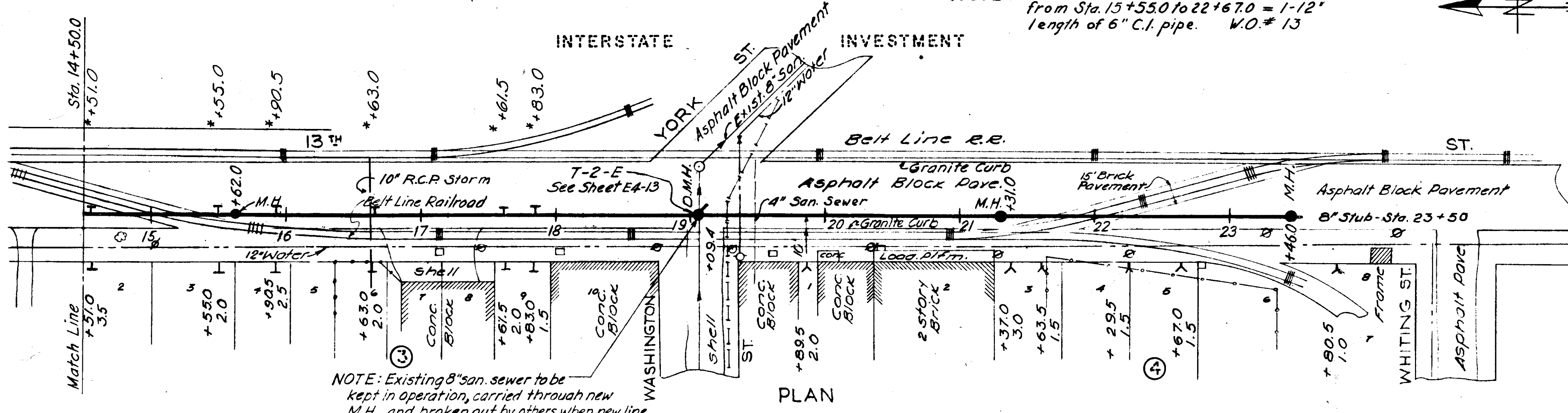
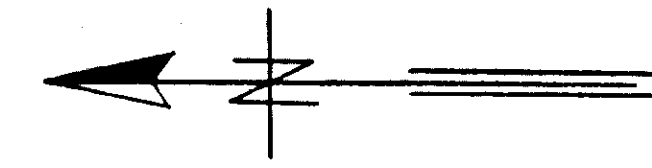
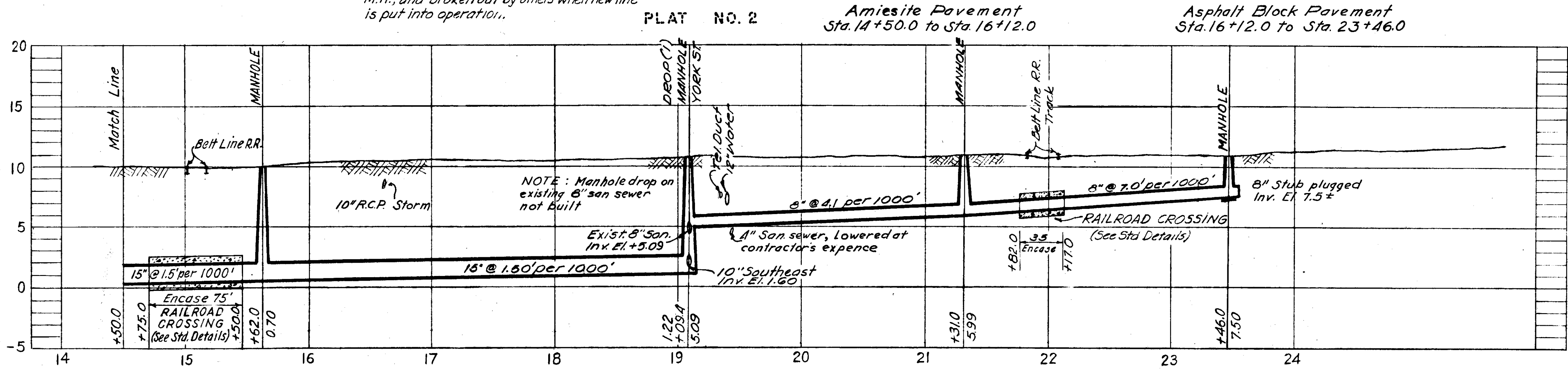


NOTE: House connections under RR. tracks from Sta. 15+55.0 to 22+67.0 = 1-12' length of 6" C.I. pipe. W.O.# 13



NOTE: Existing 8" san. sewer to be kept in operation, carried through new M.H., and broken out by others when new line is put into operation.

* House Connections Plugged at Sewer
 Sta. 14+51.0 E
 Sta. 15+55.0 E
 Sta. 15+90.5 E
 Sta. 16+63.0 E
 Sta. 17+61.5 E
 Sta. 17+83.0 E



PROFILE T-2

SEWER LINE LOCATION	
SEC. MAP NO.	LINE NO.
1-13	52

GREELEY AND HANSEN
 ENGINEERS
 CHICAGO, ILL.

AS-BUILT PLAN
 Revised to show actual conditions according to construction records as of Oct. 13, 1950 (G.L.L. 6-12-51)

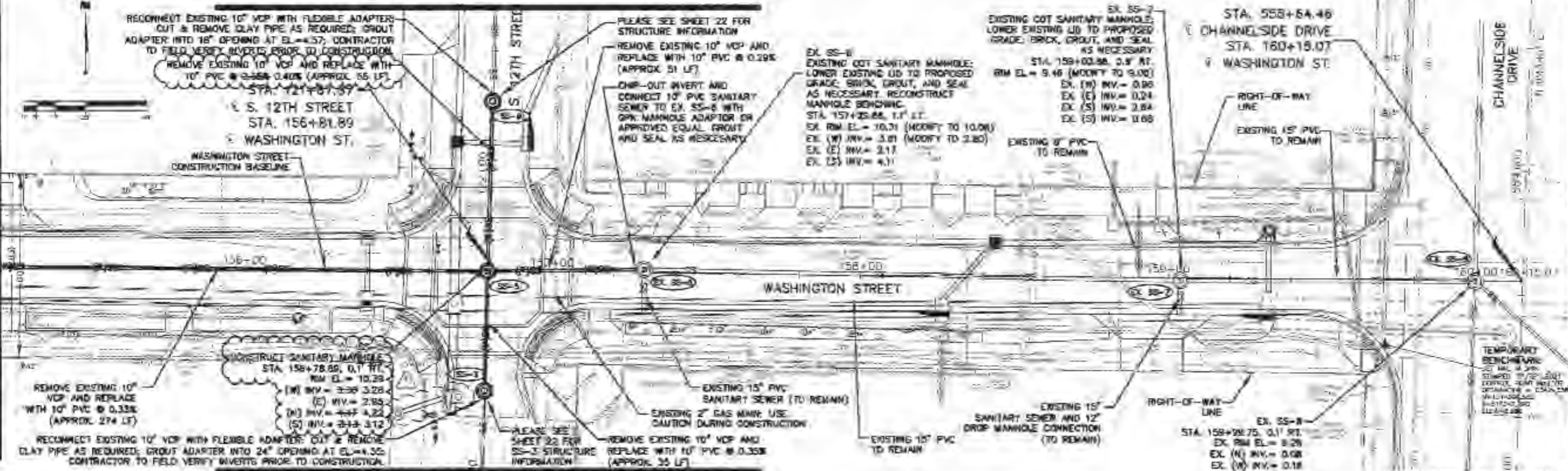
CITY OF TAMPA, FLORIDA. SEWER IMPROVEMENTS.	
DIVISION E4.	
T-2 STA. 14+50 TO STA. 23+46	
DES. FFL DR. REH CKD. LAB DATE: JUNE 1949	SCALE 1" = 50' 0 50 100
SHEET E4-10 OF 19	

45-25

SEE SHEET 22 FOR 12TH ST. INTERSECTION DETAILS

CITY OF TAMPA WASTE WATER SYSTEM NOTES:

MATCHLINE - STA. 155+20.00 SEE SHEET 19

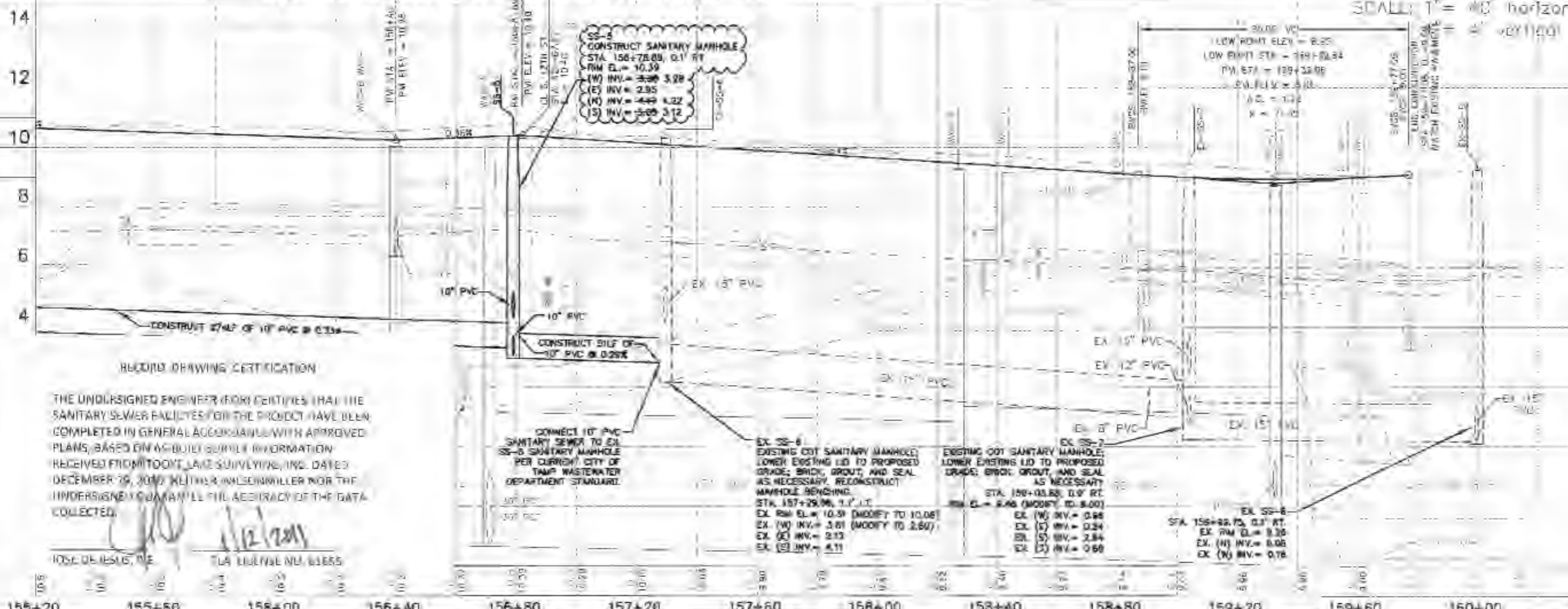


SEE YORK STREET IMPROVEMENTS
(PROJECT NUMBER 04915-006-209)
FOR CONTINUATION

1. AT LEAST 3 WEEKS PRIOR TO CONSTRUCTION, THE CONTRACTOR SHALL NOTIFY THE CITY OF TAMPA WASTE WATER DEPARTMENT AT 240-3300 AND SURVEY THEM WITH ALL THE REQUIRED SHOP DRAWINGS, THE CONSTRUCTION STARTING DATE, PROPOSED SCHEDULE AND OTHER INFORMATION AS REQUIRED. THE FIELD ENGINEERING OFFICE SHOULD ALSO BE CONTACTED 5 DAYS PRIOR TO CONSTRUCTION TO ENSURE AVAILABILITY OF INSPECTION PERSONNEL. ANY WORK PERFORMED PRIOR TO NOTIFYING FIELD ENGINEERING OR WITHOUT A DEPARTMENT INSPECTOR PRESENT MAY BE SUBJECT TO REMOVAL AND REPLACEMENT.
2. THE CONTRACTOR SHALL PERFORM AN INFLATATION/DEFLATION TEST ON ALL EXISTING SEWERS AND A PRESSURE TEST ON ALL FORCE MAINS (AS APPLICABLE) IN ACCORDANCE TO CITY OF TAMPA REGULATIONS. SAID TESTS ARE TO BE CARRIED OUT BY THE ENGINEER OF RECORD AND SUBMITTED TO THE CITY OF TAMPA WASTE WATER DEPARTMENT FOR APPROVAL. THE CONTRACTOR'S COORDINATION AND MOTIVATION TO ALL PARTIES IS THE CONTRACTOR'S RESPONSIBILITY.
3. ONE OR MORE OF THE FOLLOWING CERTIFICATES/SHOP DRAWINGS DEPENDING ON THE TYPE OF WORK TO BE PERFORMED SHOULD BE REVIEWED WITH THE DESIGN DIVISION PRIOR TO APPROVAL FOR CONSTRUCTION AND SUBMITTED IN ACCORDANCE WITH THE ABOVE NOTE IN:
 - a. COPY/RE-CERTIFICATE OF MANUFACTURE
 - b. MANHOLE SHOP DRAWINGS AND STRENGTH CERTIFICATES
 - c. FRAMES AND COVER SHOP DRAWINGS
 - d. FLEXIBLE COILING SHOP DRAWINGS
 - e. LAPPING PIPE JOINTS
 - f. JACK PIT DETAIL
 - g. CRUSHED STONE SPECIFICATION
 - h. WARE HOPE LISTINGS
 - i. MANHOLE DROP CONNECTION DETAIL
4. THE FOLLOWING MUST BE COMPLETED PRIOR TO PROJECT FINALIZATION:
 - a. FINAL INSPECTION IN CONJUNCTION WITH DEPARTMENT PERSONNEL COMPLETED.
 - b. AS-BUILTS HAVE BEEN SUBMITTED AND ACCEPTED.
 - c. ALL NECESSARY TESTING COMPLETED AND CERTIFIED.
 - d. RELEASE OF PERMITS/CONTINUATION OF COMPLETION APPROVAL (IF APPLICABLE).

SEE SHEET 22 FOR 12TH ST. INTERSECTION DETAILS

WASHINGTON STREET



- a. WHERE NOTED, LOWER EXISTING LID, THE CONTRACTOR SHALL PROTECT THE EXISTING CAST IRON RING AND COVER AND MAKE THE ADJUSTMENT WITHIN THE BRICK RING (SEWER) SHALL BE A MINIMUM REQUIRE. LOWERING MORE THAN THE EXISTING BRICK RING, ALLOWING THE CONTRACTOR SHALL CAREFULLY REMOVE THE ECCENTRIC CONE, SAW CUT A RING IN NECESSARY HIGH FROM THE HARMFUL SECTION AND THEN REPLACE THE ECCENTRIC CONE (SEWING WITH BRICK-BACK, BRICK RING (AS SHOWN) AND FRAME AND COVER) WITHIN WHICH THE CONTRACTOR SHALL CONSTRUCT A CONCRETE POLYMER REINFORCED WITH #4 BARS (MINIMUM 10" DIA) IN 12" HIGH AND 8" THICK AROUND THE SAW CUT JOINT. SHOULD THE CAST IRON FRAME AND COVER ANY OF THE JOINTS BE DAMAGED, THE CONTRACTOR SHALL REPLACE EITHER OR BOTH WITH NEW IRON.
3. RECONSTRUCT MANHOLE BENCHING IN ALL EXISTING AND FUTURE MANHOLES IN WHICH SUMP OR 1" CONNECTING SEWER ELEVATIONS ARE TO BE MODIFIED.

NOTE:
SEE SHEET 1 FOR SIGNATURE, SEAL AND SURVEYOR'S NOTES.

ISSUED FOR CONSTRUCTION

RECORD DRAWING CERTIFICATION
THE UNDERSIGNED ENGINEER (PRO) CERTIFIES THAT THE SANITARY SEWER FACILITIES FOR THE PROJECT HAVE BEEN COMPLETED IN GENERAL ACCORDANCE WITH APPROVED PLANS, BASED ON AS-BUILT SURVEILY INFORMATION RECEIVED FROM TOOMY LAKE SURVEYLING, INC. DATED DECEMBER 29, 2010. NEITHER WILSONMILLER NOR THE UNDERSIGNED GUARANTEE THE ACCURACY OF THE DATA COLLECTED.

JOSE DELGADO, PE
12/2011
TIA ENGINEER NO. 61855

WilsonMiller
New Directions in Planning, Design & Construction Since 1958
4000 E. 11th Avenue, Suite 100
Tampa, FL 33610
Tel: 813.288.1111
www.wilsonmiller.com

Drawn:	MAC	Date:	03/10/09
Designed:	HAC	Date:	08/04/09
Checked:	ED	Date:	08/04/09
Reviewed:	EP	Date:	03/10/09
Approved:	Colin	Date:	08/10/09
Approved:	Colin	Date:	08/10/09



CITY OF TAMPA
ECONOMIC AND COMMUNITY
DEVELOPMENT DEPARTMENT

CHANNEL DISTRICT
WASHINGTON ST. STORMWATER IMPROVEMENTS
WASTEWATER RELOCATION
AS-BUILT SURVEY

Field Book:	
Atlas Sheet:	
File No.:	04915
Job No.:	04915
Scale:	AS NOTED
Sheet:	007-020

B070-161

