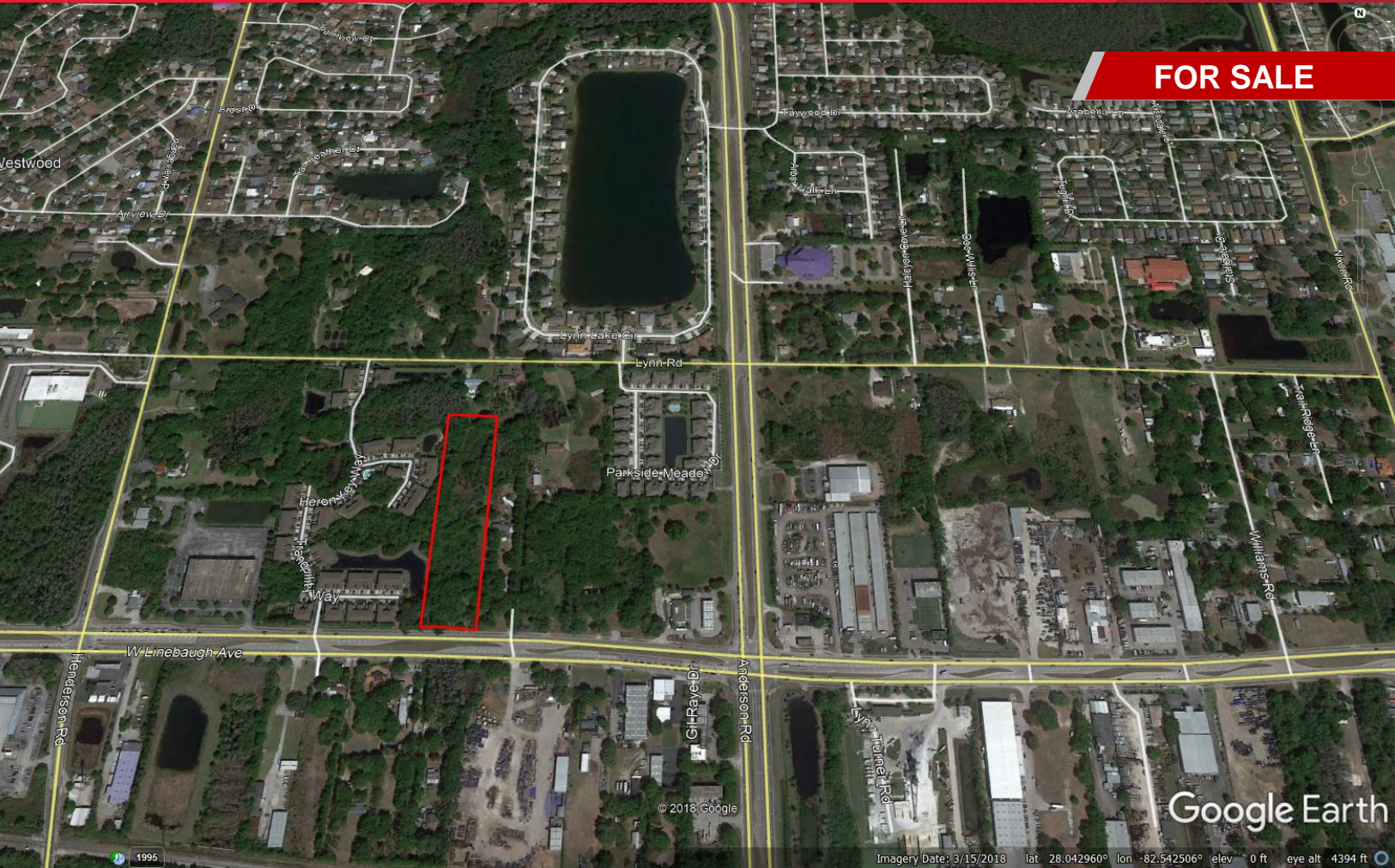




OFFICE SITE

3.35 Gross Acres MOL

Tampa (Hillsborough County), Florida



TAMPA/CARROLLWOOD OFFICE SITE

PROPERTY INFORMATION

LOCATION: 6119 W Linebaugh Ave Tampa, FL

SIZE: 3.35 gross acres MOL

PRICE: \$300,000

ZONING: AS-1

FUTURE LAND USE: Suburban Mixed Use 6

WATER: 12" DIP south side of Linebaugh Ave

SEWER: 8" PVC FM Northside of Linebaugh Ave

For more information, contact:

Bruce Erhardt, ALC
Executive Director
+1 813 223 6300
Bruce.Erhardt@cushwake.com



[Visit Website](#)

©2019 Cushman & Wakefield. All rights reserved. The information contained in this communication is strictly confidential. This information has been obtained from sources believed to be reliable but has not been verified. NO WARRANTY OR REPRESENTATION, EXPRESS OR IMPLIED, IS MADE AS TO THE CONDITION OF THE PROPERTY (OR PROPERTIES) REFERENCED HEREIN OR AS TO THE ACCURACY OR COMPLETENESS OF THE INFORMATION CONTAINED HEREIN, AND SAME IS SUBMITTED SUBJECT TO ERRORS, OMISSIONS, CHANGE OF PRICE, RENTAL OR OTHER CONDITIONS, WITHDRAWAL WITHOUT NOTICE, AND TO ANY SPECIAL LISTING CONDITIONS IMPOSED BY THE PROPERTY OWNER(S). ANY PROJECTIONS, OPINIONS OR ESTIMATES ARE SUBJECT TO UNCERTAINTY AND DO NOT SIGNIFY CURRENT OR FUTURE PROPERTY PERFORMANCE.

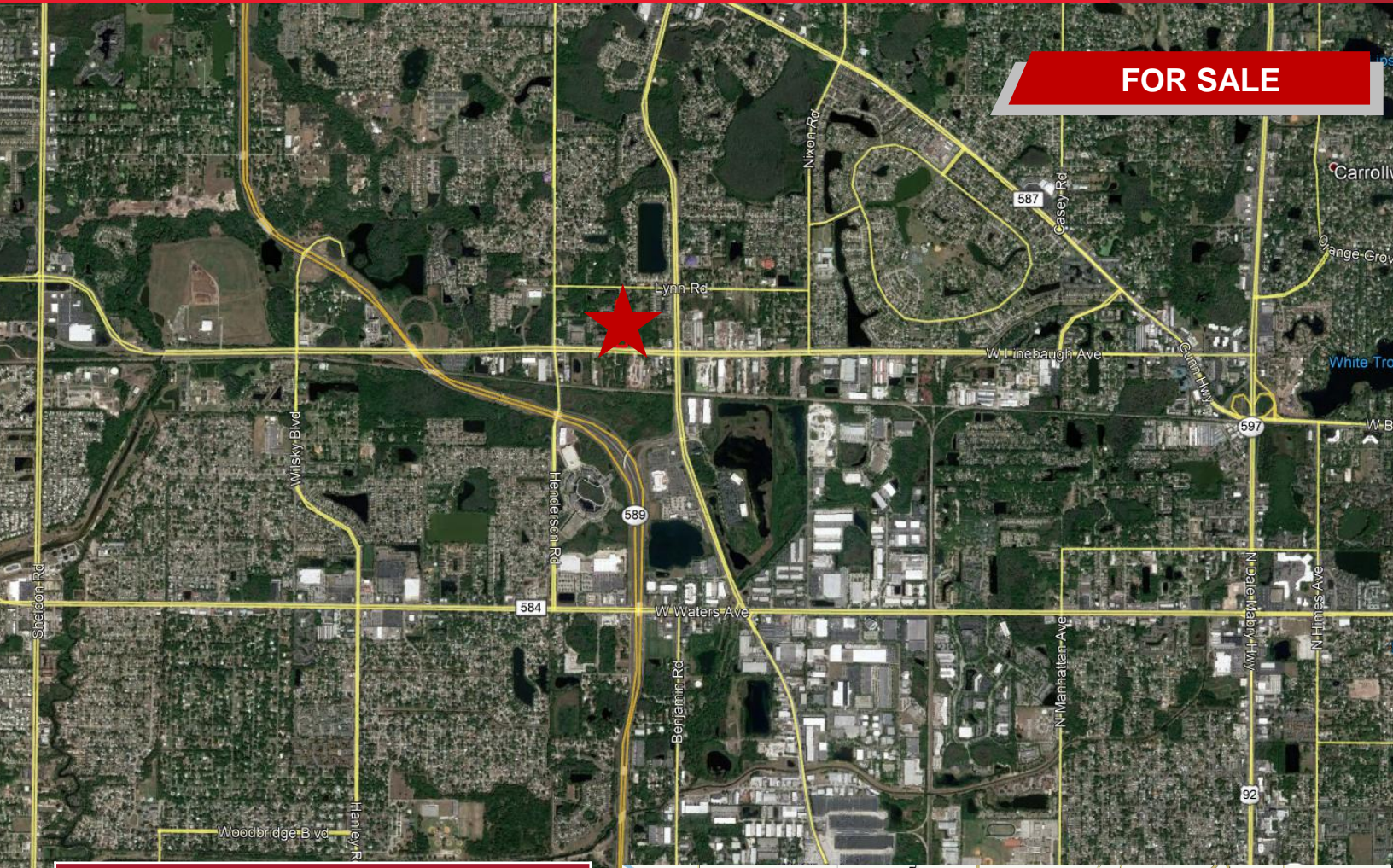


OFFICE SITE

3.35 Gross Acres MOL

Tampa (Hillsborough County), Florida

FOR SALE

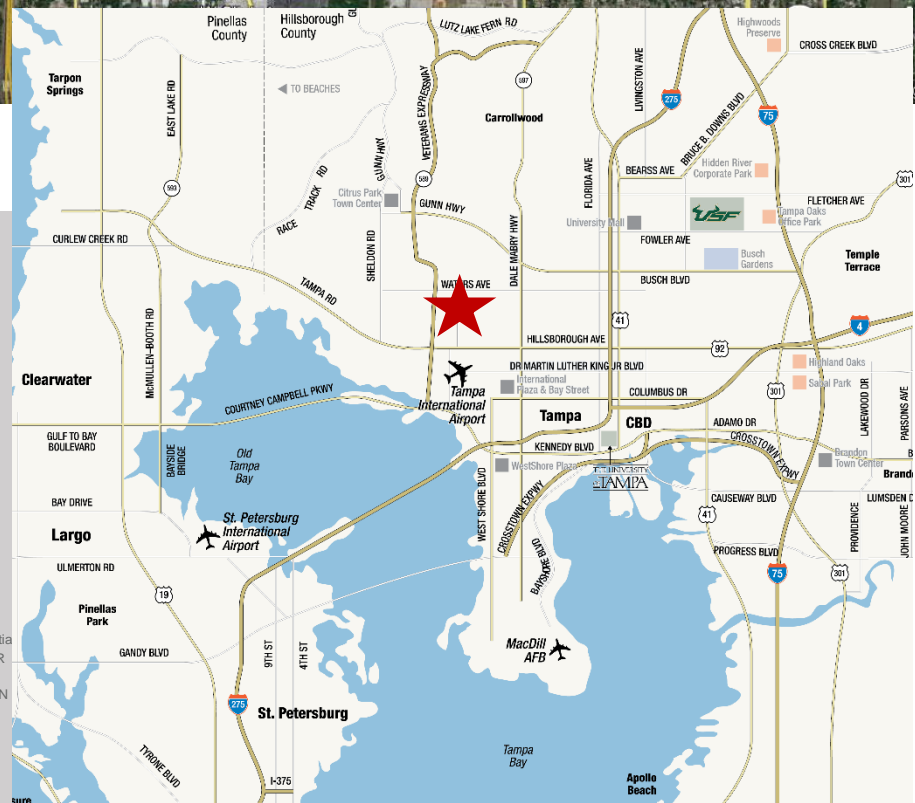


DISTANCES

| | |
|---------------------|------------|
| Veterans Expressway | 0.8 miles |
| I-275 | 5.7 mile |
| TIA Terminal | 8.4 miles |
| Tampa CBD | 12.3 miles |

For more information, contact:

Bruce Erhardt, ALIC
Executive Director
+1 813 223 6300
Bruce.Erhardt@cushwake.com



©2019 Cushman & Wakefield. All rights reserved. The information contained in this communication is strictly confidential. This information has been obtained from sources believed to be reliable but has not been verified. NO WARRANTY OR REPRESENTATION, EXPRESS OR IMPLIED, IS MADE AS TO THE CONDITION OF THE PROPERTY (OR PROPERTIES) REFERENCED HEREIN OR AS TO THE ACCURACY OR COMPLETENESS OF THE INFORMATION CONTAINED HEREIN, AND SAME IS SUBMITTED SUBJECT TO ERRORS, OMISSIONS, CHANGE OF PRICE, RENTAL OR OTHER CONDITIONS, WITHDRAWAL WITHOUT NOTICE, AND TO ANY SPECIAL LISTING CONDITIONS IMPOSED BY THE PROPERTY OWNER(S). ANY PROJECTIONS, OPINIONS OR ESTIMATES ARE SUBJECT TO UNCERTAINTY AND DO NOT SIGNIFY CURRENT OR FUTURE PROPERTY PERFORMANCE.