

# Dade City Single Family Site

FOR SALE 135.35 ACRES ±

## Residential Development Opportunity

Dade City (Pasco County), Florida



**CUSHMAN &  
WAKEFIELD**



For more information, please contact:

**Bruce Erhardt**  
Executive Director  
+1 813 204 5312  
[bruce.erhardt@cushwake.com](mailto:bruce.erhardt@cushwake.com)

**Jeannette Jason, CCIM**  
Director  
+1 813 254 4500  
[jeannette.jason@cushwake.com](mailto:jeannette.jason@cushwake.com)

**Christine Maguire-King**  
Associate  
+1 813 424 3206  
[christine.mk@cushwake.com](mailto:christine.mk@cushwake.com)



# Dade City Single Family Site

FOR SALE 135.35 ACRES ±

## Residential Development Opportunity

Dade City (Pasco County), Florida

### PROPERTY PROFILE

#### Location

Dade City, east I-75, north of S.R. 52

#### Size

135.35 acres MOL

#### Future Land Use

RES-3

#### Zoning

PD-H1 for 306 single family and 100 townhome lots

#### Price

MARKET

#### Parcel ID Number

32-24-21-0000-00300-0000

#### Utilities

- Sewer – “FM” 6,500 feet south of the site
- Water – 8” at the site

#### Flood Zone

X

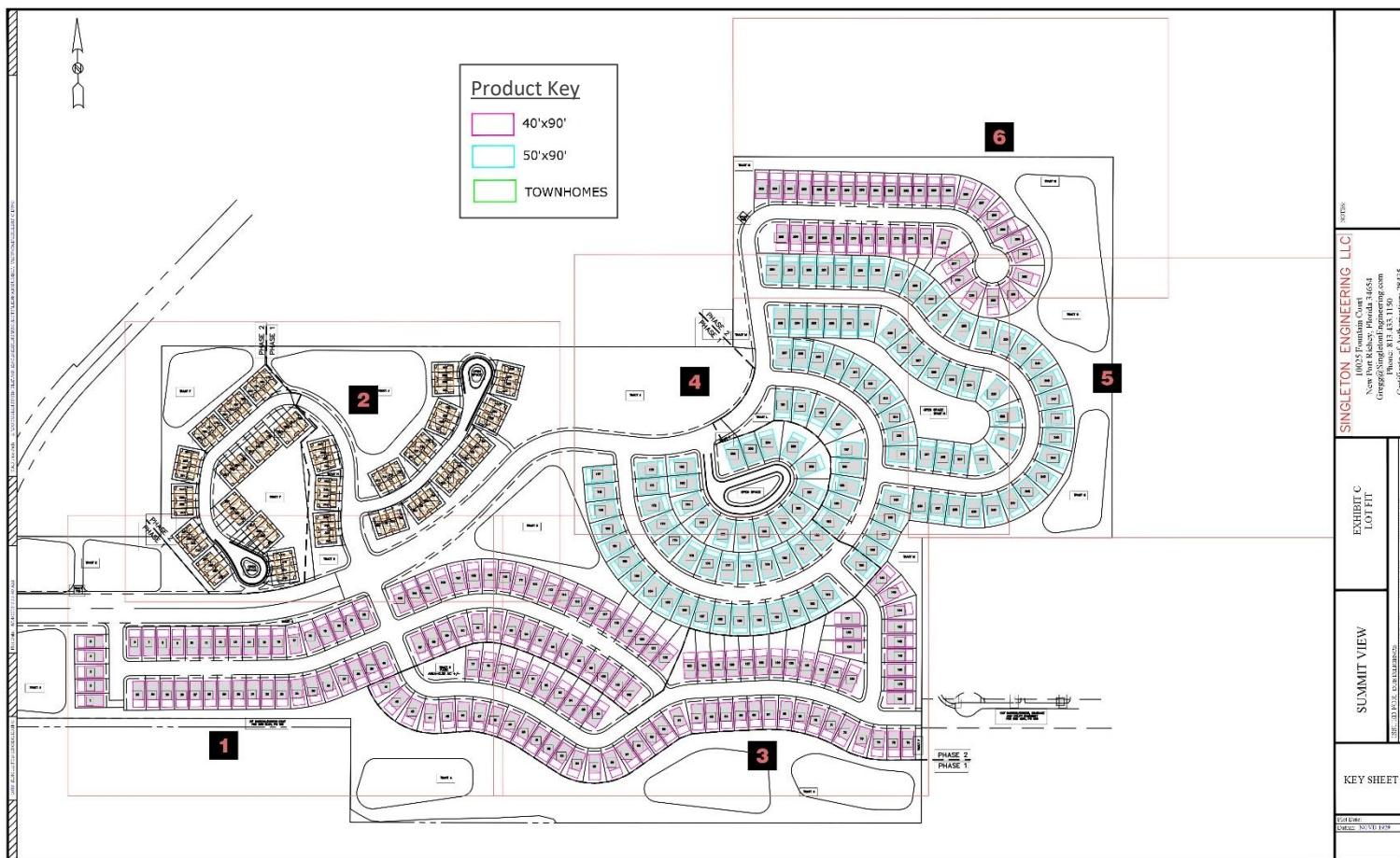
#### Excess Fill

Estimated to include 400,000 cubic yards of excess fill.  
Sales contracts pending for the excess fill.



[Click for Website](#)

### SITE PLAN



For more information, please contact:

**Bruce Erhardt**  
Executive Director  
+1 813 204 5312  
[bruce.erhardt@cushwake.com](mailto:bruce.erhardt@cushwake.com)

**Jeannette Jason, CCIM**  
Director  
+1 813 254 4500  
[jeannette.jason@cushwake.com](mailto:jeannette.jason@cushwake.com)

**Christine Maguire-King**  
Associate  
+1 813 424 3206  
[christine.mk@cushwake.com](mailto:christine.mk@cushwake.com)

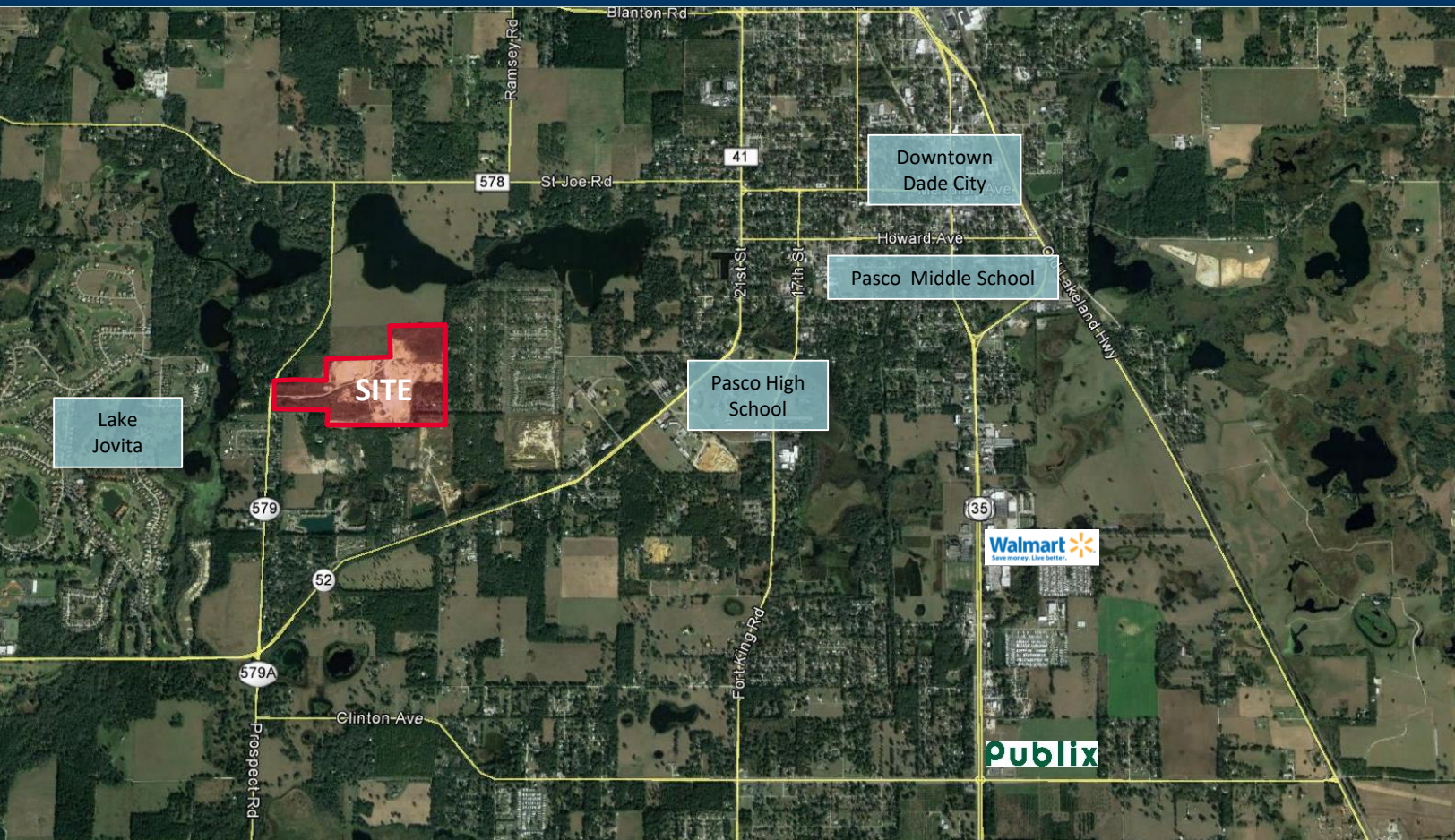


# Dade City Single Family Site

FOR SALE 135.35 ACRES ±

## Residential Development Opportunity

Dade City (Pasco County), Florida



### DISTANCES

#### Shopping & Restaurants

Publix at Shoppes of Dade City	4.49 miles
Burger King, Subway & Wendy's	4.71 miles
Walgreens & CVS	5.38 miles
Walmart	5.42 miles
Shoppes at Wiregrass	16.83 miles

#### Entertainment

Lake Jovita Golf & County Club	1.54 miles
Dade City Antique District	3.75 miles
Tampa Bay Golf & County Club	4.40 miles

#### Medical

Advent Health Group Primary Care	3.34 miles
Advent Health 160 room hospital	4.17 miles
Florida Hospital Zephyrhills	8.9 miles

#### Schools

St. Leo University	2.2 miles
Pasco Elementary	3.3 miles
Pasco High School	3.2 miles
Pasco Middle School	3.4 miles

#### Major Roads / Areas

Hwy 52	1.1 miles
Downtown Dade City	3.64 miles
Hwy 301	3.9 miles
I-75/52 exit	6.7 miles
Tampa CBD	35.3 miles



# Dade City Single Family Site

FOR SALE 135.35 ACRES ±

## Residential Development Opportunity

Dade City (Pasco County), Florida

